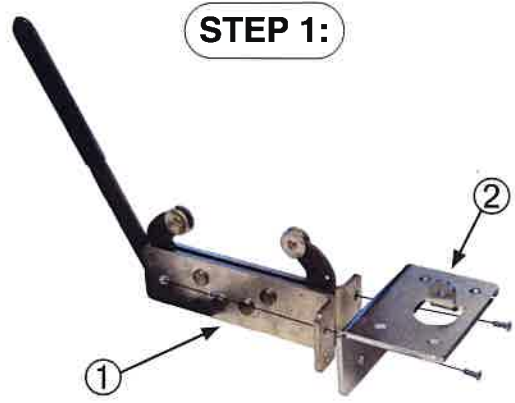


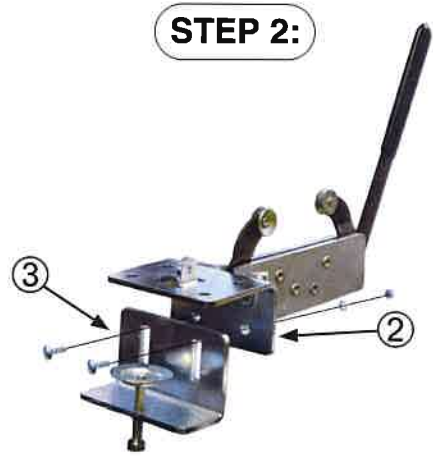
**CRAFTMASTER II™**  
**ASSEMBLY INSTRUCTIONS**

**STEP 1:**



**STEP 1:**  
 MOUNT ① (BODY ASSEMBLY) TO ② (TABLE MOUNT BRACKET) USING TWO (2) 5/16" X 1" COUNTERSUNK HEAD BOLTS, TWO (2) 5/16" LOCK WASHERS, AND TWO (2) 5/16" HEX NUTS. TIGHTEN THE FASTENERS SECURELY.

**STEP 2:**



**STEP 2:**  
 ATTACH ③ (CLAMP BRACKET ASSEMBLY) TO ② (TABLE MOUNT BRACKET) USING TWO (2) 5/16" X 1" CARRIAGE BOLTS, TWO (2) 5/16" LOCK WASHERS, AND TWO (2) 5/16" HEX NUTS. DO NOT TIGHTEN THE BOLTS AT THIS STEP.

**STEP 3A:**



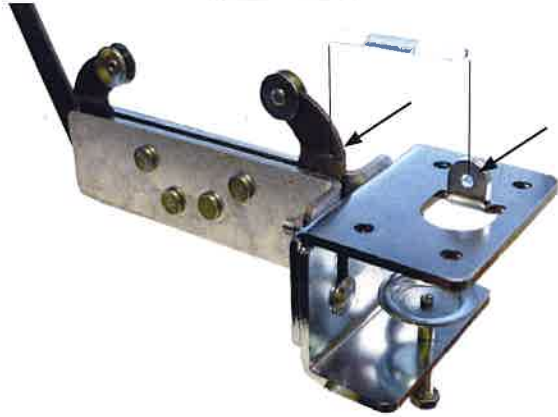
**STEP 3B:**



**STEP 3:**  
 MITCHELL WREATH RINGS RECOMMENDS USING A MINIMUM TABLE THICKNESS OF 1" WHEN USING YOUR CRAFTMASTER II™ MACHINE. LOOSEN THE ④ (CLAMP BOLT) BY HAND UNTIL IT APPEARS AS STEP 3A SHOWS. THE ③ (CLAMP BRACKET ASSEMBLY) IS READY TO BE FIXED TO YOUR WORK TABLE BY SLIDING THE ③ (CLAMP BRACKET ASSEMBLY) TO A SNUG POSITION WHILE TIGHTENING THE FASTENERS USED IN STEP 2 SECURELY.

# CRAFTMASTER II™ ASSEMBLY INSTRUCTIONS

## STEP 4:



### STEP 4:

INSTALL THE SPRING THAT WAS SUPPLIED IN THE HARDWARE PACK INCLUDED WITH YOUR CRAFTMASTER II™ MACHINE. THE SPRING SHOULD MOUNT THRU THE HOLES SHOWN WITH MINIMAL RESISTANCE.

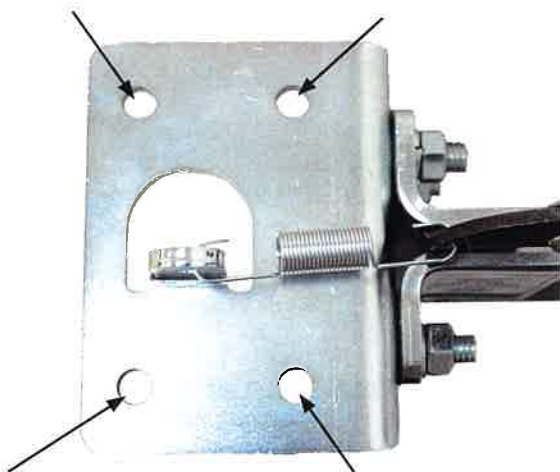
## STEP 5:



### STEP 5:

YOUR CRAFTMASTER II™ MACHINE IS NOW READY FOR CLAMPING WREATH RINGS.

## OPTIONAL MOUNTING:



### OPTIONAL MOUNTING:

THE CRAFTMASTER II™ CAN BE MOUNTED DIRECTLY TO YOUR WORKTABLE BY OMITTING THE CLAMP BRACKET ASSEMBLY FROM STEP 2, AND UTILIZING THE FOUR HOLES PROVIDED IN THE TABLE MOUNT BRACKET. DUE TO THE VARYING TABLES THAT CAN BE USED, HARDWARE FOR THIS TYPE OF MOUNTING IS NOT INCLUDED IN THE HARDWARE PACK.